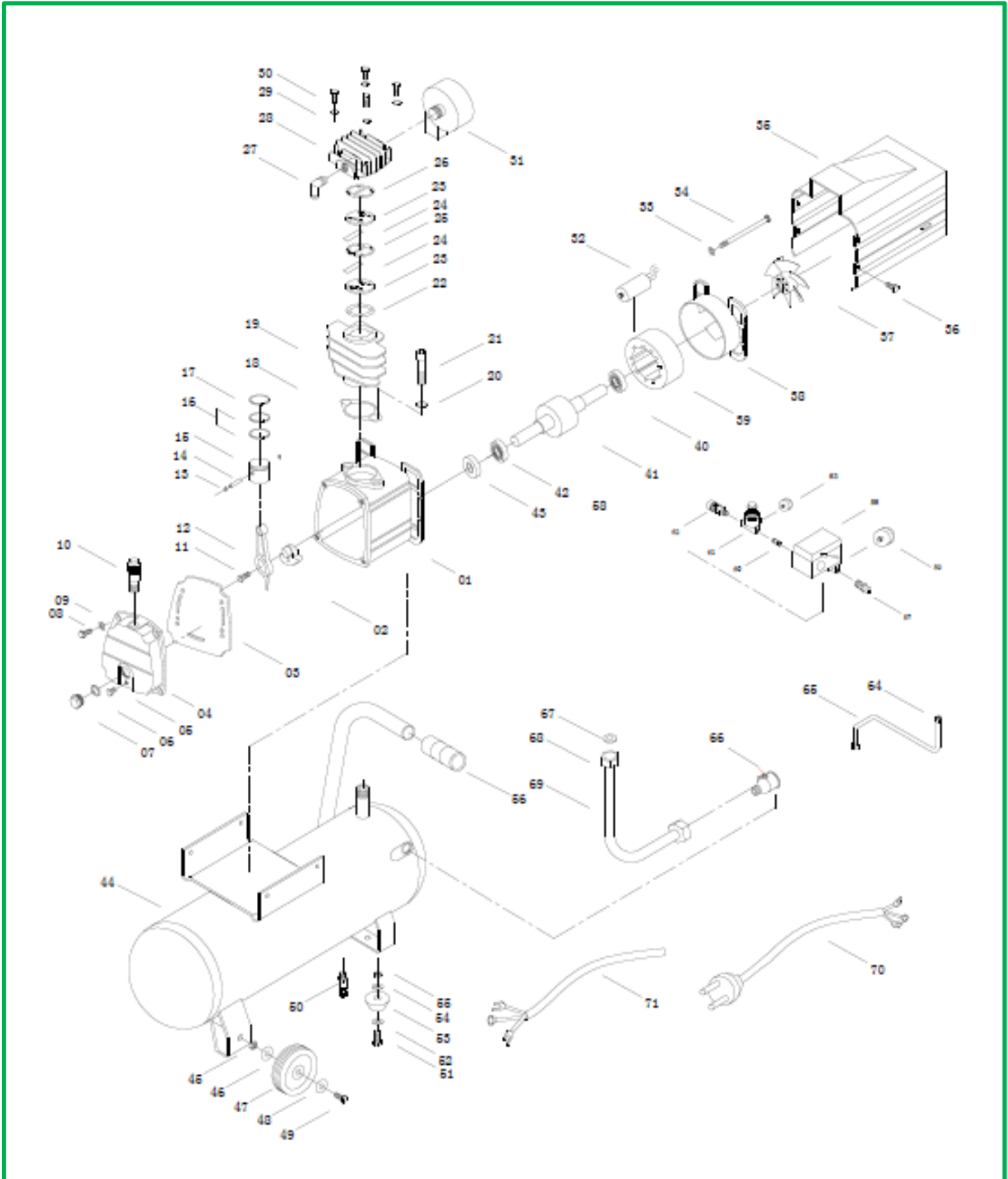




Referencia: **PRO 55**





Referencia: **PRO 55**

- | | | |
|----------------------|---------------------|------------------------|
| 01. Crankcase | 14. Piston pin | 27. Elbow exhaust |
| 02. Crank shaft | 15. Piston | 28. Cylinder head |
| 03. Gasket | 16. Piston ring | 29. Spring |
| 04. Crank case cover | 17. Piston ring | 30. Bolt |
| 05. Bolt | 18. Gasket | 31. Air filter |
| 06. Gasket | 19. Cylinder | 32. Capacitance |
| 07. Oil glass | 20. Spring | 33. Spring |
| 08. Bolt | 21. Bolt | 34. Bolt |
| 09. Spring | 22. Valve gasket | 35. Cover |
| 10. Breath | 23. Valve | 36. Bolt |
| 11. Bolt | 24. Valve plate | 37. Fan |
| 12. Connecting rod | 25. Gastet | 38. Rear bearing crank |
| 13. Circlip | 26. head gasket | 39. Stator |
| | | |
| 40. Bearing | 53. Cushion foot | 66. Check valve |
| 41. Rotator | 54. Washer | 67. Washer |
| 42. Bearing | 55. Bolt | 68. Exhaust nut |
| 43. Oil sealing | 56. Handle | 69. Exhaust pipe |
| 44. Tank | 57. Safety valve | 70. Plug |
| 45. Nut | 58. Pressure switch | 71. Electrical wire |
| 46. Washer | 59. Pressure gauge | |
| 47. Wheel | 60. Connect | |
| 48. Washer | 61. Regulator | |
| 49. Bolt | 62. Air cock | |
| 50. Drain cook | 63. Pressure gauge | |
| 51. Bolt | 64. Unloading nut | |
| 52. Washer | 65. Unloading pipe | |